



Bradnam's
windows & doors nz



Blueprint

Summer 09/10

THE LATEST FROM BRADNAM'S

Bradnam's Founder wins Prestigious Business Award



In an action packed evening for Bradnam's Company founder Ron Holden, NALCO won the Westpac Business of the Year Supreme Award on Friday 18 September. The award was presented to Ron Holden, Managing Director NALCO by the Prime Minister, John Key and Ian Blair, General Manager of Business Banking at Westpac.

have demonstrated strong financial management, with low debt levels, as well as quality manufacturing.

Completing the hat-trick, NALCO won the Cogita Excellence in Innovation & Strategy Award for the exciting work they have done in the development and commercialisation of unique aluminium window and door systems for Bradnam's and Nulook.

The judges were impressed that this company had seen opportunities rather than problems within their sector to develop new and leading- edge products and services. Despite the impact of the tough trading environment, the Senior Management team had the confidence to continue to invest in developing innovative solutions.

NALCO scored an award hat-trick: as well as winning the coveted 2009 Westpac Business of the Year Supreme Award, the company also won the EMA Excellence in Manufacturing Award for the development and achievements at Bradnam's East Tamaki, one of 5 NALCO owned window fabrication businesses.

Bradnam's ET has led New Zealand fabricators in the use of NALCO's patented connection systems to significantly improve on the weathertightness integrity of aluminium joinery and also delivers much better residential joinery quality.

The judges say this company uses lean manufacturing principles in their business with a high level of innovativeness. They have managed their way through the recession which has hit their industry hard. They

"These awards recognize the incredible talent we have in our business" Ron Holden said. "The effort the team has put in over the last 7 years has been nothing short of amazing. We came into a business that was downsizing and had suffered from a lack of investment over a long period. NALCO have found and developed great people in this business, and that, along with a huge focus on good systems, processes and disciplines has made a great difference. Going forward with the team we have developed there are no limitations, and what is so powerful is the real belief our organization has about what is possible."



Ron Holden with John Key, NALCO staff on Stage being presented the supreme award.

WIN tickets to the ITM Hamilton 400. See back page for details.

Designed to open minds



Opus Architecture was named the inaugural winner of the New Zealand Architecture Medal, the country's highest architecture accolade announced at the annual New Zealand Architecture Awards Gala Dinner on 22 May 2009.

The award winning project is considered New Zealand's first purpose built special needs school designed to provide care and education for about 60 pupils with physical and mental disabilities.



The citation reads: "A building which seeks to meet the needs of our most vulnerable children deserves the best possible architecture. The Wilson School is a sophisticated assembly of timber clad boxes set among the mature trees of its well established site. Recessed openings and tinted glazing ensure privacy while providing the occupants with views of the garden, the chapel and the city beyond.

An unwavering focus on the wellbeing of the pupils and staff and a genuine spirit of collaboration have allowed architect and client to create an extraordinary building, full of hope. It makes for architecture at its finest."



The project team at Bradnam's Commercial made certain all the joinery supplied for this entire project, came in on time and to specification. And the result is award winning.

Kitchen Joiner takes over Windows at Bradnam's

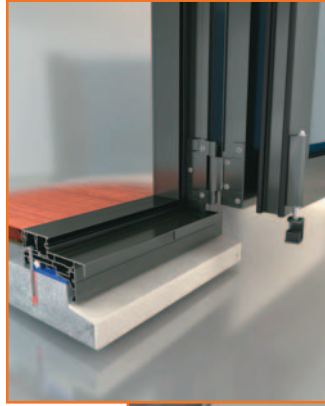


The recent appointment of Lance Preston as manager to Bradnam's flagship East Tamaki branch will further bolster Bradnam's management team. Lance comes to Bradnam's with an established background, in the Kitchen industry having owned and run his own company and headed the NKBA industry executive for many years. His hobbies include motorsport, classic cars and V8 racing.

Lance said recently "I thought window joinery would be simpler than kitchens but they both require complexity, good process and attention to detail. I look forward to the challenges of developing the Bradnam's business further with my team. With our recent win of the Manufacturing Excellence Award we are clearly on the right track.

SovereignSeries™ Release

Left: Inline Bifold head detail
Right: Inline Bifold sill detail



Bradnam's now has available the new architectural SovereignSeries™ range it's latest residential/commercial offer to Architects, Designers, Builders and Homeowners.

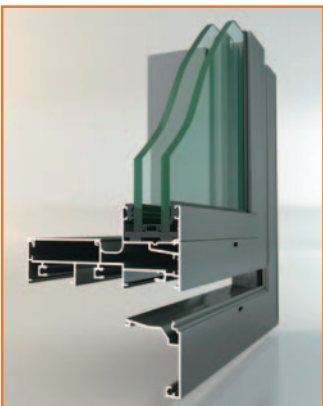
SovereignSeries™ is based on a 100mm platform width and offers a complete range of specialty Architectural joinery products suited to discerning residential customers. The suite accepts glazing solutions from 4mm to 24mm across all products, and offers a clean square styling.

Optional frame facings for all frames come in 25mm or 35mm sizes. This provides a wide range of installation options and allows more freedom to architects to obtain the style they require. Sovereign Series™ offers concealed fixing within the frame of the windows or by a special concealed fixing lug for the Sliding & Stacking doors and French doors.

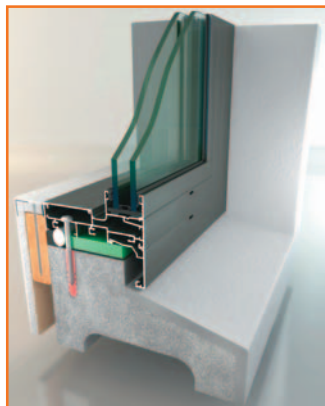
Maximise your unobstructed opening space with the new SovereignSeries™ Inline Bifold door. Heights of 2400mm with 900mm panels are possible in most instances.

The innovative SovereignSeries™ inline bi-fold door provides the option of having the door panels open inline with the building cladding. NALCO Designer Dave Nicholson said, this design has cleverly overcome the pitfalls faced by designers when seeking to create a product which will reliably fold back inline without losing control of the large panels or creating an unsightly tracking system for the homeowner.

The suite is fully compatible with Bradnam's existing 100mm commercial doors.



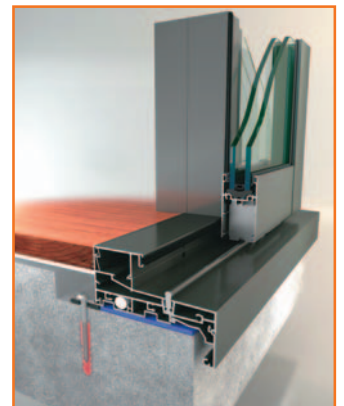
Window Frame showing flange options



Window Frame with flange



Sliding Door without flange



Sliding Door with flange

If you would like more details on SovereignSeries™ please visit www.bradnams.co.nz or talk to your local Bradnam's Branch.



Bradnam's World Competition Winner

Congratulations to Mark Lowe, from Focus Homes in Thames - winner of the Bradnam's World competition. From now on, Mark will be enjoying crystal clear viewing on his new 40" Samsung HD TV.

The prize draw was open to anyone who visited the site and answered correctly a question based on Bradnam's residential WeatherTight™ Suite.

Flush Frame



Demand for a square flush frame from Residential and Commercial customers has prompted Bradnam's to release a new alternate WeatherTight™ frame. Marketing Manager Mark Gilbert said these frames are ideal in situations where you are looking to complement square styling in existing style or mixing square styled products from SovereignSeries™ or UrbanSlider™ with windows.

The New Frames are manufactured using Bradnam's patented crimped corner, and also utilises the patented Transom/Mullion connection system when applicable to avoid the potential for leaky joinery.

Race online & be in to **WIN!**

Login to Bradnam's World www.bradnamsworld.co.nz, fill out your details and go into the draw to win two tickets to the ITM Hamilton 400 V8 Car Racing.

With our new interactive website, you can:

- Zoom into joinery animations;
- See construction details and drainage;
- Select popular hardware;
- Learn how WeatherTight™ joinery protects homes.

