

# Blueprint

Autumn 2009

THE LATEST FROM BRADNAM'S

## New Interactive site simplifies window and door selection



Architects and builders can now visit [www.bradnamsworld.co.nz](http://www.bradnamsworld.co.nz), a revolutionary new interactive website that helps them to choose the right windows and doors for every room in a home.

The site takes the user on a tour of a virtual house to see the WeatherTight™ range of aluminium windows and doors in realistic settings. This innovative technique provides a clear idea of what the joinery will look like.

Another useful feature of the site is that it allows the user to zoom right in to joinery construction details and see how the

unique WeatherTight™ technology protects homes from water damage.

Animations and a voiceover help to provide a clear understanding of all the benefits.

Visitors to [www.bradnamsworld.co.nz](http://www.bradnamsworld.co.nz) can also download hardware and colour options for a range of windows and doors, view commonly used configurations and get helpful design tips.

It's all about making the whole process of choosing windows and doors a whole lot easier. ■

**WIN**  
**a Samsung 40"**  
**HD TV.**

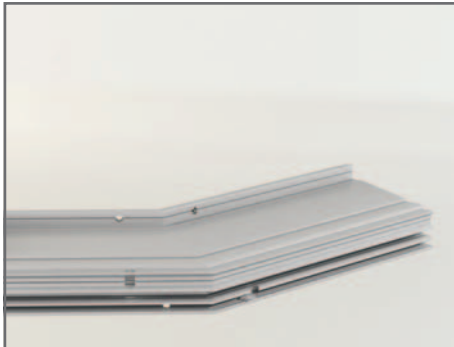
Bradnam's customers can click on to [www.bradnamsworld.co.nz](http://www.bradnamsworld.co.nz) before 31 March 2009, register their details and answer a few simple questions about what can be found on the site and go in the draw to win this prize. Terms and conditions can be found on the site.

# Bradnam's cure for leaking Facet windows

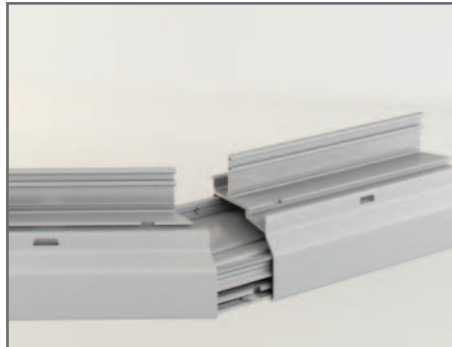
Facet windows have long been the leaking culprit in many houses due to transport damage prior to installation completion. Joints open up and seals become ineffective resulting in unwanted leaks.

Bradnam's Facet windows offer a unique design that solves this age-old problem. These Facet windows have welded soakers head and sill that strengthen and support the frame. Soakers are riveted to the frames and sills are sealed to provide a secure weatherproof joint. Our connections into the soaker never penetrate the glazing platform and are always in a safe dry area, unlike our competitors!

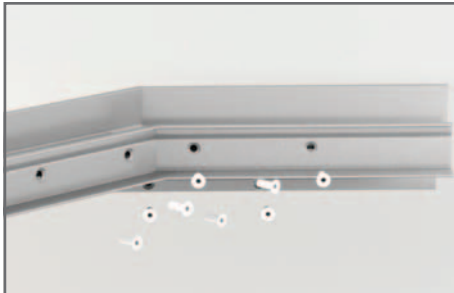
The result is a much stronger frame which when transported will not damage the seal and result in leaks. ■



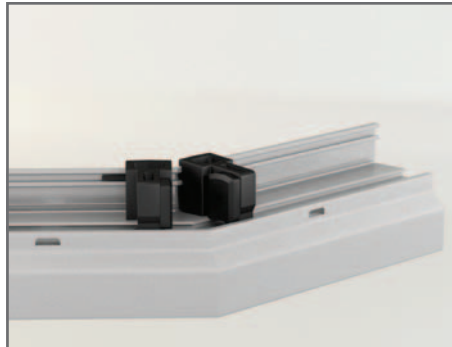
**1** Welded aluminium soakers are placed head and sill.



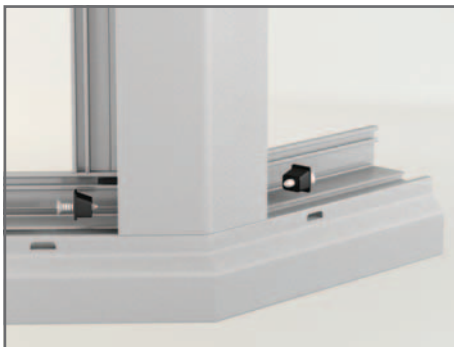
**2** Soakers strengthen the window frame.



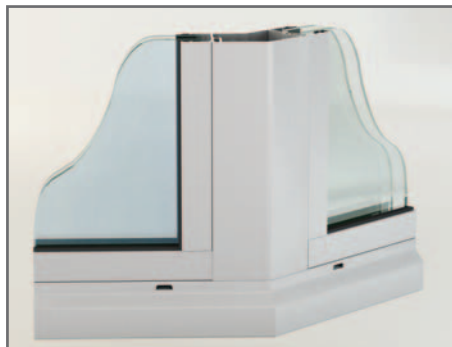
**3** Window frames are riveted to the soakers where they can not cause leaks to the glazing platform, the sills are specially sealed.



**4** Screwless connectors are secured to the frame.



**5** Mullions are fixed to connectors.



**6** Strong leak proof joinery ready for transit and installation.

## New Colour Warranty from Bradnam's

Bradnam's now offer the Interpon D1010 powder coat warranty on all their standard colour range. This change means previous restrictions are removed around location, building height and purpose.

The new D1010 Warranty covers:

- 10 Year Film Integrity;
- 10 Year Colour Integrity;
- Residential and Commercial Applications;
- All areas near any salt or surf line.

Importantly, these warranties are:

- Not restricted to residential applications;
- Not restricted to 3 levels above ground, and;
- Not restricted to greater than 100 metres from salt water or surf line.

Also available by request are warranties for prestigious or monumental projects that include:

### D2015

- 15 Year Film Integrity;
- 15 Year Colour Integrity;
- Residential and Commercial Applications;
- All areas near any salt or surf line.

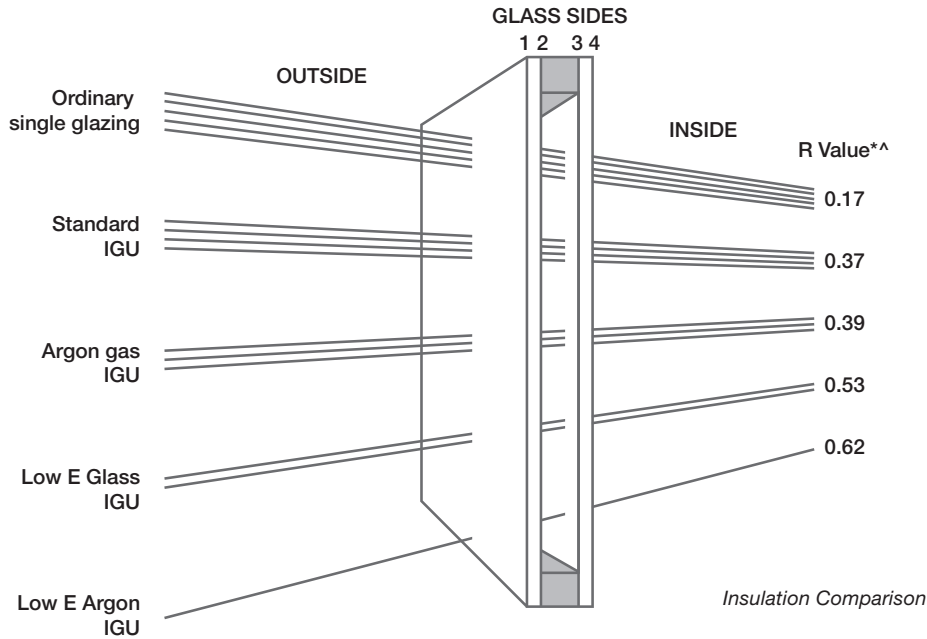
### D3000

- 20 Year Film Integrity;
- 20 Year Colour Integrity;
- Residential and Commercial Applications;
- All areas near any salt or surf line.

For more details on Bradnam's colour range call your nearest branch or visit [www.bradnams.co.nz](http://www.bradnams.co.nz). ■



# Warning!! Not all Double Glazing (IGU's) are the same



**Q. Does it cost more to use a 12 or 14mm spacer over say an 8mm spacer?**

**A.** No they cost the same.

**Q. What benefit does a glazing platform of 24mm offer?**

**A.** It provides greater flexibility for designers to use a wider combination of glass types in combination with the optimum spacers 12mm or 14mm to increase thermal performance.

**Q. If 12-14mm is optimal, why are there larger sizes?**

**A.** In rare cases due to high wind deflection larger spacers may be required.

**Q. Why are smaller spacers commonly used?**

**A.** Commonly residential suites have a maximum 20mm glazing pockets reducing performance. Bradnam's is an exception.

## HOW IGU'S WORK

Clear glass accounts for less than 5% of a windows insulation value, the rest is supplied by the air layers each side of the glass.

The heat flow resistance of still air is greater than that of glass. A glass unit made from 2 panes enclosing an airspace will have about twice the insulation value of a single pane. Tests show the optimal airspace is 12mm. See the table below.

The implementation of new H1 legislation means a wider use of glazing options are coming into use. Here are the answers to some commonly asked questions about double glazing.

**Q. How do you optimise your Aluminium joinery's insulation performance without the additional cost of a thermally improved frame?**

**A.** Ensure a 12 or 14mm spacer is used.

Bradnam's WeatherTight™ Suite has been designed to provide for this eventuality. Bradnam's standard sliding doors and recently released UrbanSlider™ and SovereignSeries™ are all designed to accommodate 24mm IGU's. In fact all Bradnam's WeatherTight™ products will accommodate 24mm glazing.

So before you add Argon or Low E to your specification make sure you have the correct spacer specified. ■

## INSULATION COMPARISON

Glass Type	Outer Glass (mm)	Air Space (mm)	Inner Glass (mm)	R Value*^	Heat Loss Reduction %
Single Clear	4			0.17	0%
IGU Clear	4	8	4	0.34	50%
	4	12	4	0.37	54%
IGU Argon	4	8	4	0.37	54%
	4	12	4	0.39	56%
	4	14	4	0.39	56%
IGU Low E Side 3	4	8	4	0.45	62%
	4	12	4	0.53	68%
	4	14	4	0.53	68%
IGU Low E (Low E Side 3 & Argon)	4	8	4	0.55	69%
	4	12	4	0.62	72%
	4	14	4	0.61	72%

\* The R Value is the value of the thermal resistance of a building element. Its units are m<sup>2</sup>C/W and it is used to compare common building materials.

^ R Values measured at centre of glass.

# New UrbanSlider™ for larger double glazed panels

Indoor and outdoor flow has become a central feature of New Zealand's architecture to accommodate our enjoyment of the outdoors.

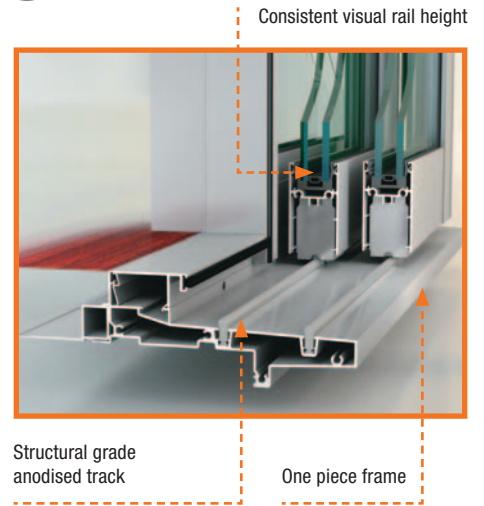
Complementing this has been the need to provide joinery to make larger more friendly doors to enable us to take advantage of this trend.

Bradnam's UrbanSlider™ can accommodate panels as high as 2.7m. That's much larger than other residential sliders currently available. This potential for truly dramatic

design doesn't come at the cost of interior comfort. That's because the door panels can accommodate up to 24mm double glazing for improved insulation performance.

## Easy operation

The unique design of the structural grade (6261) anodised aluminium track allows for effortless opening and closing. The rolling mechanism is located at the bottom of the door, so even when a design incorporates the largest panel possible, the risk of any lintel sagging is minimal. As a result, there's less risk of jamming. ■



To find out more about UrbanSlider™ and Stacker Doors, contact your local Bradnam's Branch, or phone 0508 272 362.

